

## AIRTIGHT® AIRTIGHT



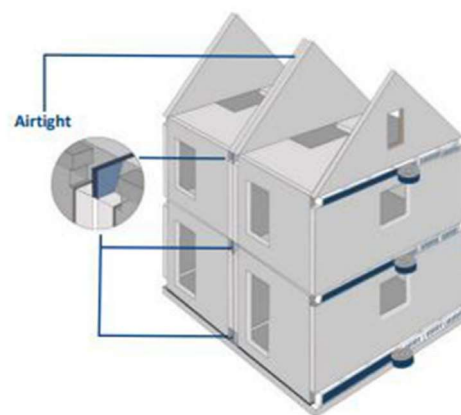
- ✓ Airtightness of the composite construction
- ✓ Reduces contact noise
- ✓ No internal condensation
- ✓ Very simple, reliable and fast assembly
- ✓ No propellants or chemicals
- ✓ Highly durable seal, no degradation of performance
- ✓ Ready without waste, easy to separate in case of demolition
- ✓ Applicable to variable cavity widths
- ✓ Used PE-foil is insensitive to moisture



## AIRTIGHT

Patented Airtight® consists of a vacuumed strip of mineral wool packed in a PE-foil with a vapour barrier and is available in various sizes. After installation, the wool expands and Airtight® will fill completely the entire space. The realized connection, which in practice is often slightly different in terms of dimensions, is thermally insulated, acoustically disconnected and airtight.

Application area for, among other things, connections between channel plate floors, wooden frame connections, HSB elements and other prefab building elements. If desired, a fully fire-resistant version is also available, see the Firetight.



## PRODUCT

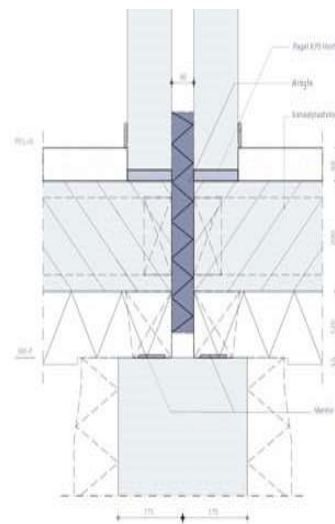
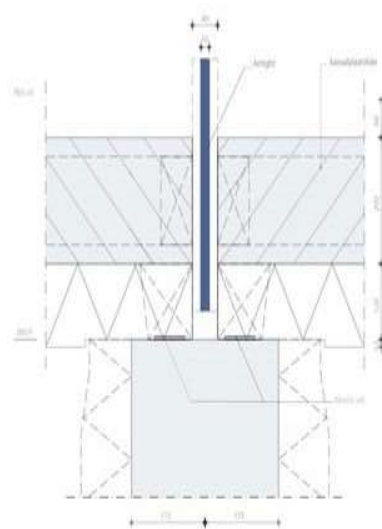
With Airtight® it is surprisingly easy to receive both an airtight and a thermal and acoustic seal between building parts in one operation.

### Airtightness

Airtight® has an optimal airtightness according to SBR class.

### General properties

The base of mineral wool falls into the highest fire class (A1). For an airtight seal class 4, 'passive building', the mineral wool must be sufficiently thick to be able to seal the gap complete. The Airtight® is produced in sufficient excess for this. The solution is also available in a fire-resistant version, called the Firetight.



## DIMENSIONS

The Airtight® is available in the following sizes:

Size	Cavity gap	Cavity gap	Cavity gap	Cavity gap	Unit
1200 x 250 mm	35 a 40 mm	40 a 55 mm	55 a 65 mm	70 a 80 mm	m1
1200 x 300 mm	35 a 40 mm	40 a 55 mm	55 a 65 mm	70 a 80 mm	m1
1200 x 400 mm	35 a 40 mm	40 a 55 mm	55 a 65 mm	70 a 80 mm	m1

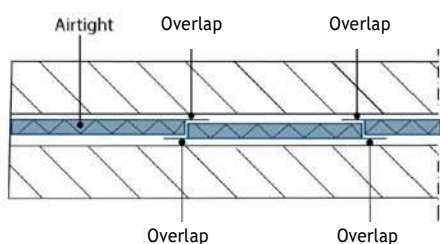
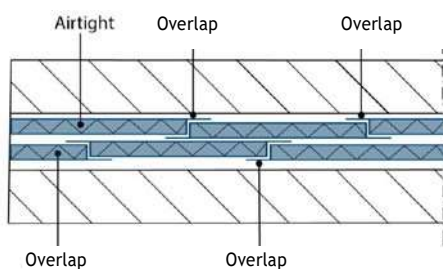
## ASSEMBLY



Note: do not cut the foil over great lengths.

## METHOD OF ASSEMBLY

- ✓ Place the Airtight® (vacuumed strip of mineral wool packed in a PE-foil with a vapour barrier) in the cavity.
- ✓ In the case of channel plate floors, the Airtight® must be at least 50 mm above and below the walls for the benefit of impact sound insulation and airtightness.
- ✓ Place a second Airtight® tightly against the first Airtight®. Use the foil overlap of the Airtight® to ensure a good airtightness at the connection.
- ✓ Prick the placed Airtights® with a pointed object to make them expand. In addition, the Airtight® must to be punctured on the side or underside, so that drainage is impossible.



## OUR POSSIBILITIES

- ✓ Cut to size of glass wool, stone wool, pir, pur, xps, eps, resol foam, melamine foam, foam glass;
- ✓ Milling of glass wool, stone wool, pir, pur, xps, eps, resol foam, melamine foam, foam glass;
- ✓ Bond insulation to glass cloth, glass fleece, or other upholstery;
- ✓ Bond insulation to wood, plaster, or other sheet material;
- ✓ Seal insulation in black or white PE-foil;
- ✓ Seal insulation in vapour barrier film;
- ✓ Tailor-made delivery of vacuum insulation.

## OUR MACHINERY

- ✓ CNC machines
- ✓ 3D milling machines
- ✓ Milling machines
- ✓ Band saws
- ✓ Cleaf bench
- ✓ Sanding machines
- ✓ Vacuum machines
- ✓ Gluing paths
- ✓ Circular saws

## WE ARE STRONG IN

- ✓ The tailor-made delivery of any type of insulation;
- ✓ Packaging separately for phase or for floor is no problem;
- ✓ All deliveries are clearly labeled, so that all items can be easily found on the construction site or in the factory;
- ✓ Together with the customer, we look for the best and cheapest solutions;
- ✓ Time deliveries and/or a truck with unloading options is possible;
- ✓ We have more than 30 years of experience in insulation.



Alert Isolatie B.V.  
's-Gravelandseweg 246  
3125 BK Schiedam  
The Netherlands

Tel.: 010 - 302 0200  
verkoop@alertisolatie.nl  
www.alertisolatie.nl